



**3 Clive Road, Preston, PR1 0AT**

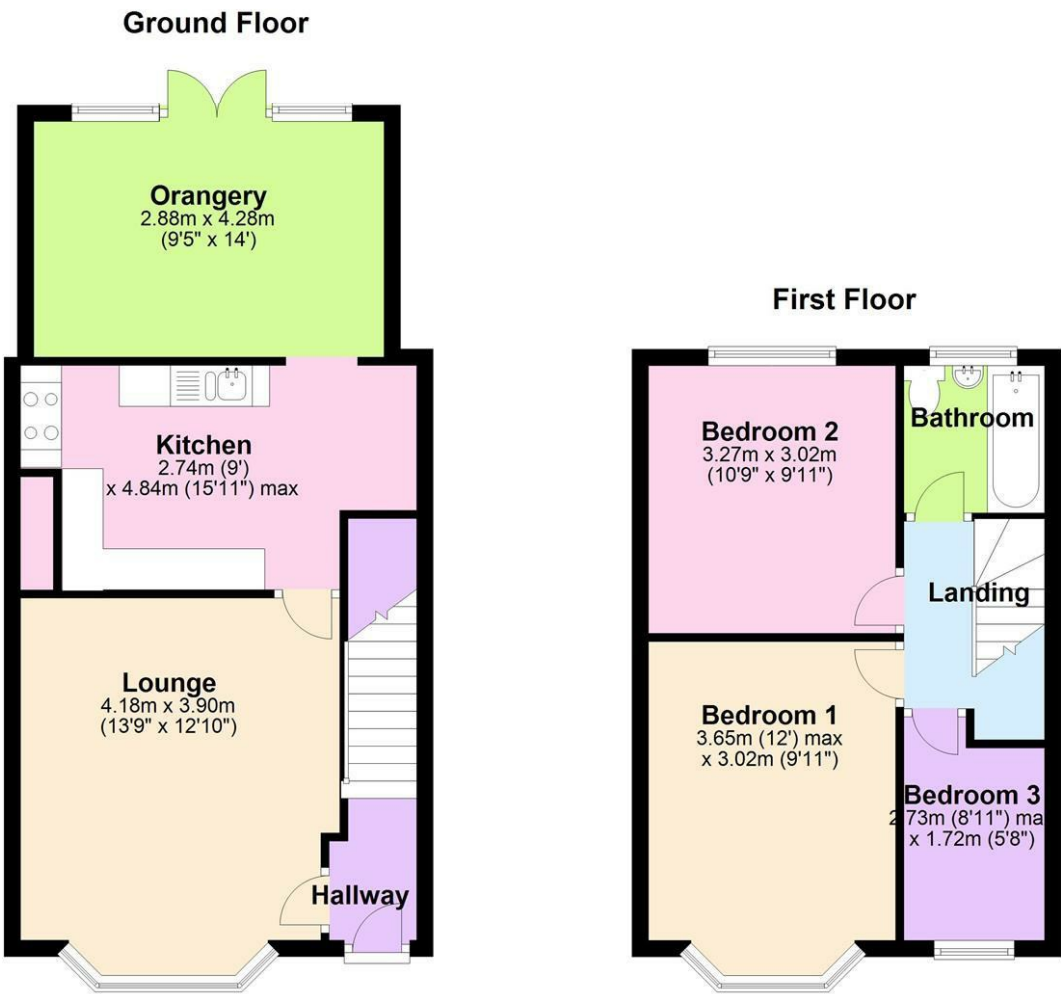
**£225,000**

What a great family home! Situated north of Liverpool Road in the incredibly popular location of Higher Penwortham. Offering exceptional value for a 3 bedroom home in this location.

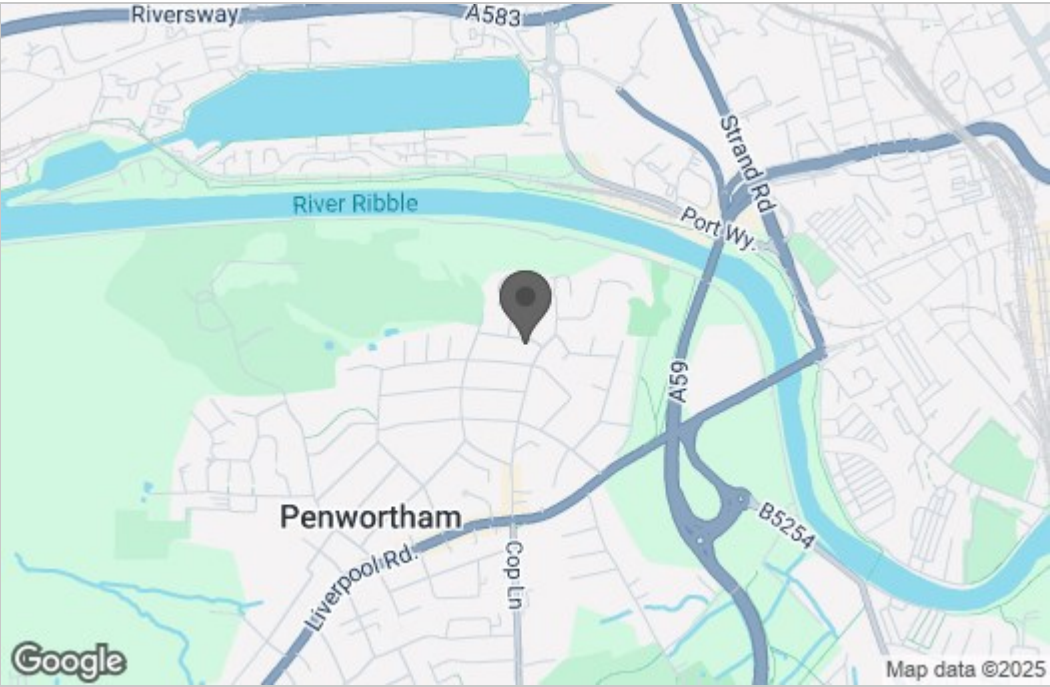
The layout utilises the space to its full potential, the lounge is the full width of the house, creating a spacious room. This leads through to the kitchen with dining area and orangery beyond. Upstairs there are 2 double bedrooms and a single. The bathroom features a large shower over the bath, recently renovated and finished to a modern standard with a Bluetooth mirror.

The rear garden is a great size, plenty of room for a grass and patio area. The house is positioned well away from the main roads so the area is very quiet. You are only a short walk to the bustling village high street with all its shops and restaurants.

Floor Plan



Area Map



Energy Efficiency Graph



These particulars, whilst believed to be accurate are set out as a general outline only for guidance and do not constitute any part of an offer or contract. Intending purchasers should not rely on them as statements of representation of fact, but must satisfy themselves by inspection or otherwise as to their accuracy. No person in this firms employment has the authority to make or give any representation or warranty in respect of the property.